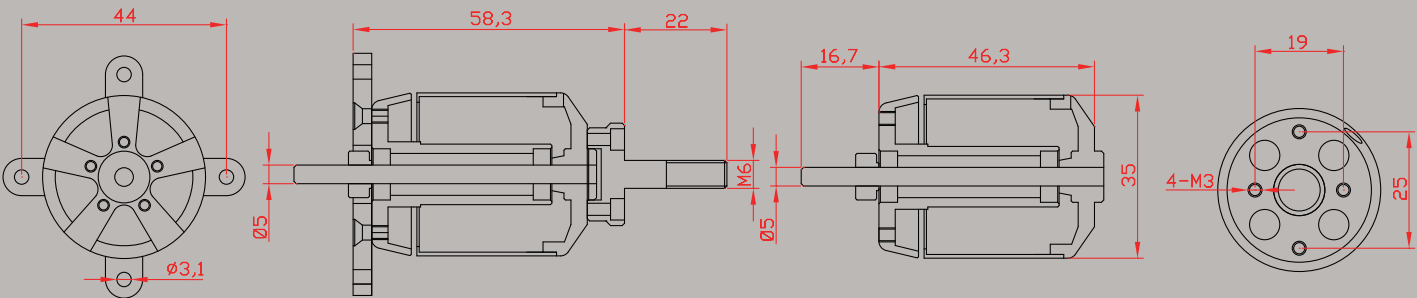


Dimensions



Specification



Dualsky Xmotor CA2 Series	XM3548CA		
Item No.(商品编码)	55131	55132	55133
Model - Turns(马达转速)	XM3548CA-4	XM3548CA-5	XM3548CA-6
RPM/V(KV)(KV值)	1080	850	720
Stator Diameter(定子直径)	28	28	28
Magnet length(磁铁长度)	26	26	26
Shaft diameter(轴径)	5	5	5
Mountingholes pitch(安装孔距)	19/25	19/25	19/25
Weight(g)(重量)	165	165	165
Resistance(Ri)(mOhm)(电阻)	22	32	46
Idle Current(Io) @10V (A)(空载电流)	2.58	1.87	1.41
No.of Cells(LiPo)(电池节数)	2..3	3..4	3..4
Max. EfficiencyCurrent[A](效率电流)	35	30	25
Max. Burst Current (15s)[A](最大电流)	44	40	37
Max. Power(15s)(最大功率)	650W	650W	650W
Input Connectors[mm](金插)	DB3	DB3	DB3
Recommended ESC(推荐调速器)	XC4018BA	XC4018BA	XC4018BA
Prop. Range(螺旋桨)	9x6...12x6	10x5...13x6.5	10x5...14x7
App. Class(适用机种)	.25- .32 Class		